

Your Key to Quality Welding



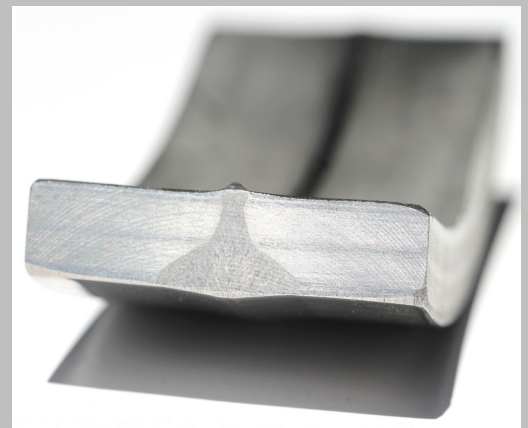
ADVANCED WELDING SYSTEMS



The world's most productive GTAW system

K-TIG Productivity benefits

- Extraordinary speed and productivity.
- Multi-hour TIG welds completed in minutes.
- Full penetration, single-pass GTAW welding up to 1/2 inch (12mm) in stainless steels
- Drastically reduced wire consumption
- Gas consumption reduced by 80-95%.
- Typical arc on savings of 85%+.
- Eliminates edge bevelling & post-weld grinding.
- Extremely high stability, consistency and repeatability.



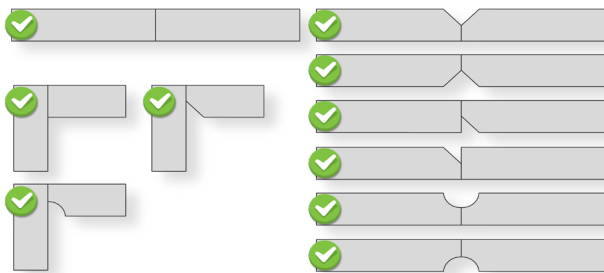
Your Key to Quality Welding

Full penetration butt welds in minutes

K-TIG welding can be applied to a wide range of longitudinal and circumferential applications from tanks, vessels and piping to boxes and complex geometries.

K-TIG is highly effective with both square butt and beveled joint presentations, can be welded autogenously and with wire, and can be used in both 1G and 2G welding positions.

Versatile & flexible. Suitable for a wide range of applications & joint preparations.



SQUARE BUTT

V PREP

U PREP

Y PREP

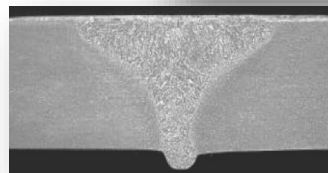
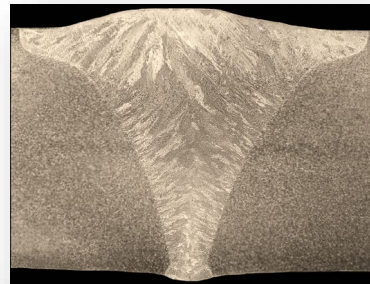
SINGLE BEVEL

DOUBLE V PREP

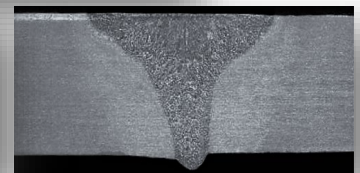
INVERTED PREPS

CORNER JOINTS

304 Stainless Steel



Duplex



Super Duplex

K-TIG Technology –Key Features

Simple, intuitive controls delivered via the K-TIG 1000 Evolve II 21" touch screen controller.

100% duty cycle for extreme reliability.

Cloud-enabled software upgrades, data backups and online support.

Built-in real-time data capture, reporting and quality management.

Flexible, suitable for a wide variety of materials, applications & industries.

Integrates seamlessly with virtually all welding automation equipment.



What is K-TIG?

1 Creates a high-energy-density GTAW arc

2 Opens & manages a full penetration 'keyhole' through the joint

3 Fuses the parent material (with or without wire)



Simple.

No edge bevelling. No gap setting. No backing bar.
Standard welding gas. Minimal cleaning.
Negligible wire, gas & power consumption.





 **KTIG**
ADVANCED WELDING SYSTEMS